



12 Roehampton Crescent MOUNT ELIZA VIC

4 3 2

Embrace minimalist coastal luxury in this architecturally designed residence, perfectly situated just steps from Ranelagh Beach and Mount Eliza Village. This five-bedroom, three-bathroom home combines exceptional family practicality with a stunning connection to its natural surroundings.

Enjoy an open living and dining space with soaring ceilings and a suspended fireplace, seamlessly connecting to landscaped gardens and a north-facing terrace with a gas-heated swimming pool.

Cook in style with state-of-the-art Gaggenau dual wall ovens, Bora induction cooktop, and Fisher & Paykel integrated fridge, all nestled in exquisite American Cherry Oak joinery.

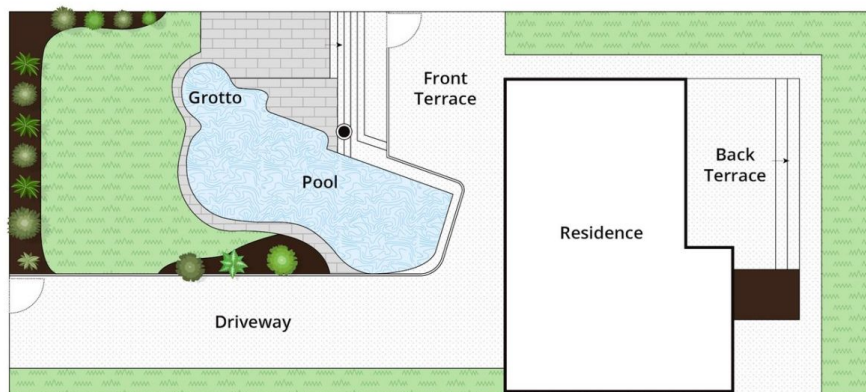
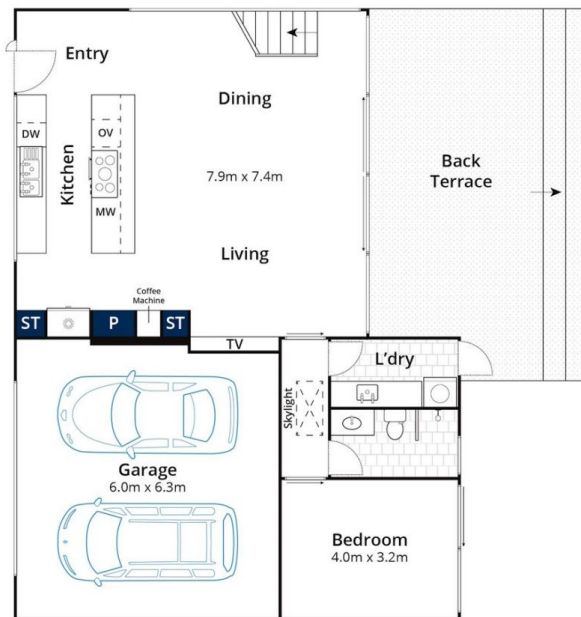
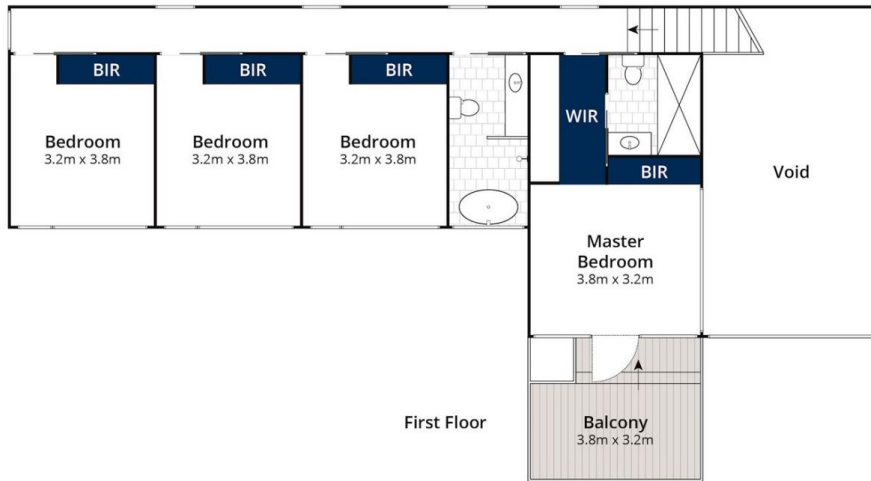
A private first-floor bedroom wing features a master suite

Type : House
Price : \$1900
Land Size : 796 sqm
View : <https://www.mcewingpartners.com/lease/vic/bayside/mount-eliza/residential/house/8163112>



Samantha Stephenson
0397872422

[For full version visit the website](https://www.mcewingpartners.com)



Approx House Area 240m²
Approx Land Area 788m²

Whilst bwr.com.au has made every attempt to ensure the accuracy of the floor plan contained here, measurements are approximate and no responsibility is taken for any error, omission, or mis-statement. This plan is for illustrative purposes only.

12 Roehampton Crescent, Mount Eliza