



3 Lady Beverly Circuit SOMERVILLE VIC

3 2 3

Offering an inviting canvas for both discerning downsizers and lively young families, this three-bedroom 2-bathroom home prioritises comfort with its dual living zones and beautifully lush, low-maintenance gardens. A prized family-friendly pocket sees conveniences to local schools, shops and public transport, making it an ideal choice for those seeking both serenity and accessibility.

Type : House
Price : \$820,000 - \$890,000
Land Size : 670 sqm
View : <https://www.mcewingpartners.com/sale/vic/mornington-peninsula/somerville/residential/house/8158928>

Cleverly designed to separate accommodation and entertaining, the home keeps the dual living zones and open dining space fluid yet defined alongside a timber kitchen complete with double wall oven, gas cooktop, dishwasher and breakfast bar. The crackle of an open fireplace is complemented by the push-button convenience of gas ducted heating and a standalone gas fireplace, as

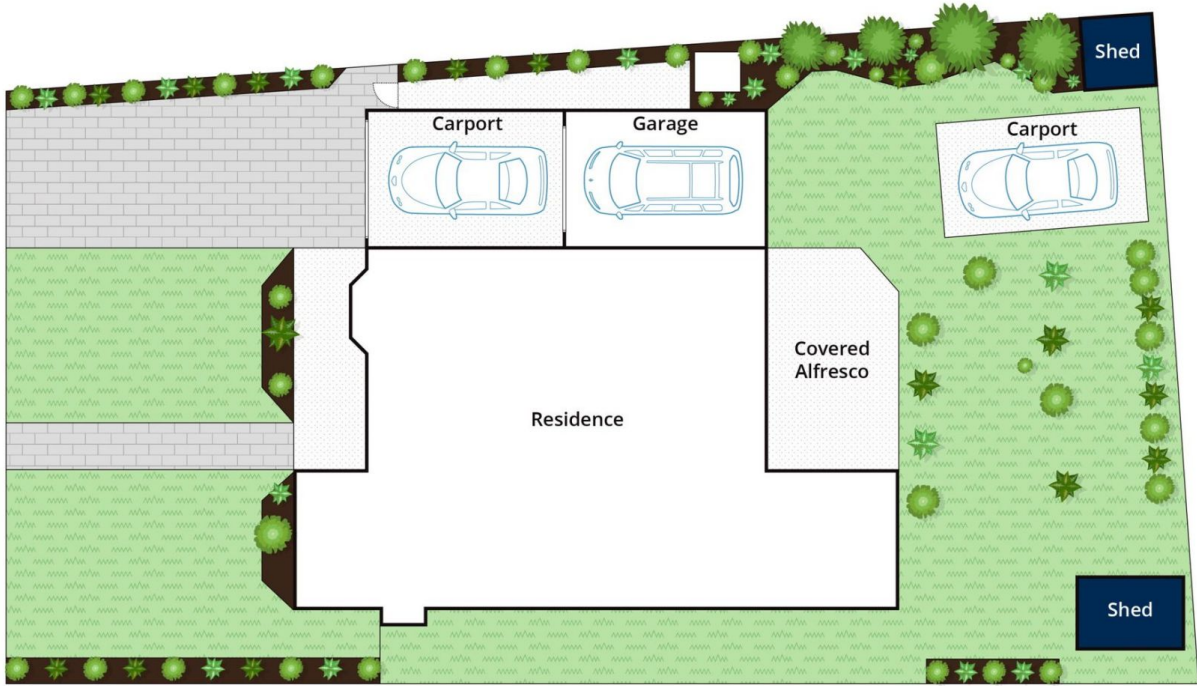
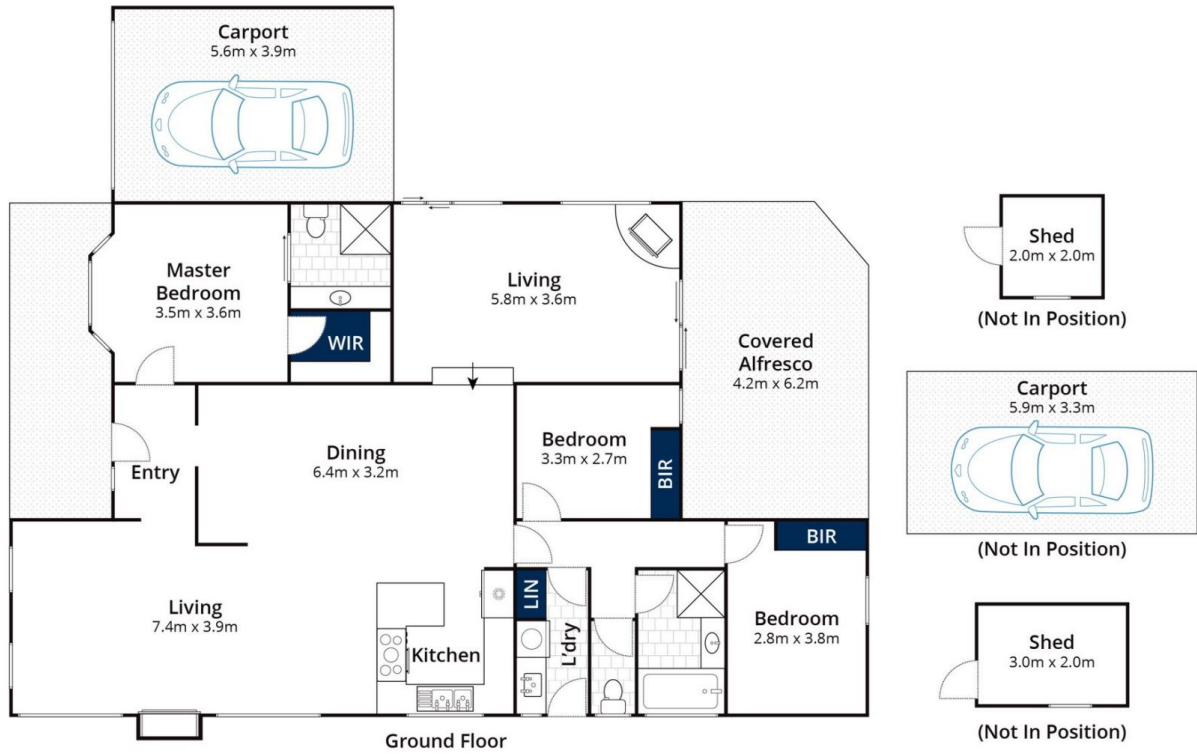
[For full version visit the website](https://www.mcewingpartners.com)



Lisa Bendle
0359754555



Dean Phillips
0359754555



Site Plan

Approx House Area 144m²

Approx Land Area 672m²

Whilst bwr.com.au has made every attempt to ensure the accuracy of the floor plan contained here, measurements are approximate and no responsibility is taken for any error, omission, or mis-statement. This plan is for illustrative purposes only.

3 Lady Beverley Circuit, Somerville