



## 2 Rendlesham Avenue MOUNT ELIZA VIC

4 3 2

One of the Ranelagh Estate's earliest homes given an incredible new life with ultra-modern, high-quality extensions and all set behind the privacy of a 100-year-old clipped hedge, a spectacular seaside lifestyle awaits moments from the beach and Ranelagh Club. A brilliant union of old and new, the unique home offers a stunning light-filled main living area with enormous glass windows and sliding door framing views of the inground pool and entertaining deck, as well as an intimate lounge with original open fireplace and double height void above for cosy winter nights with loads of charm and character. From the balcony of the main suite upstairs there is a glimpse of the bay, while the thoroughly modern kitchen delights with glass fronted cupboards, an integrated dishwasher, butler's pantry and stylish Zug ovens. Other features include a

**Type** : House  
**Price** : \$3,400,000 - \$3,600,000  
**Land Size** : 1612 sqm  
**View** : <https://www.mcewingpartners.com/sale/vic/bayside/mount-eliza/residential/house/8158698>



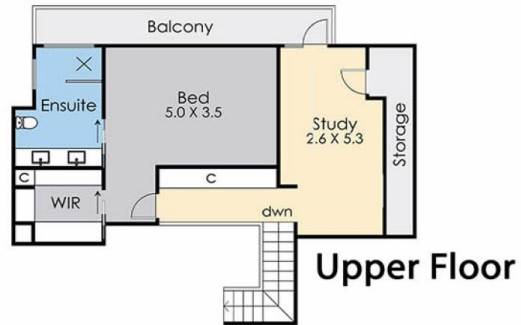
**Quentin McEwing**  
0397872422



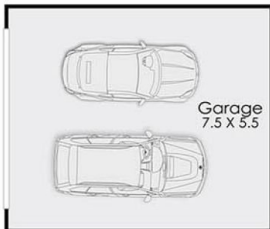
**Kelsi Culhane**  
0397872422

[For full version visit the website](https://www.mcewingpartners.com)

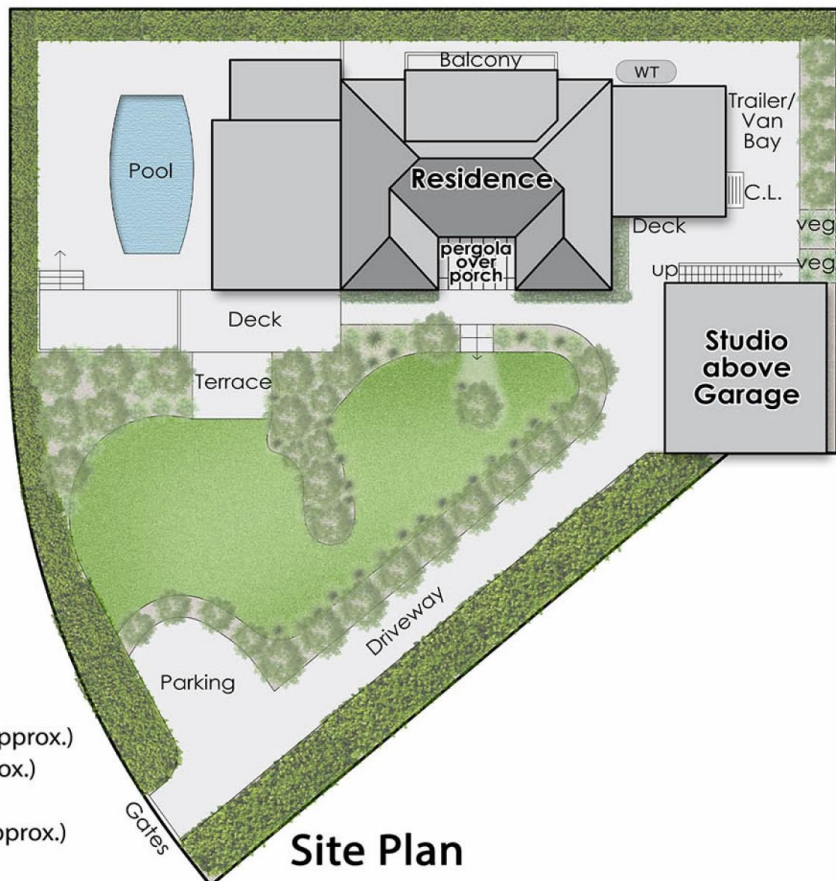




**Upper Floor**  
(Above Garage)



**Lower Floor**  
(Garage)  
Not in Position



Internal Living Area = 40 squares (approx.)  
 Porch & Balcony = 10 squares (approx.)  
 Garage Area = 5 squares (approx.)  
 Total Building Area = 55 squares (approx.)

## 2 Rendlesham Avenue, Mount Eliza

This floorplan is for illustration purposes only and no warranty is given to its accuracy. Purchasers are advised to carry out their own investigations. Produced by **realitywriters** (03) 5970 2222