



**2/14 Tanti Avenue MORNINGTON VIC**

2 2 2

Harmonising the enduring allure of classic architecture with modern sophistication, this distinguished single-level, two-bedroom apartment offers a refreshingly unique perspective on stylish downsizing. Nestled within the established grounds of Sutton Grange, it invites you to embrace a refined lifestyle all within walking distance of Mornington's vibrant Main Street and Shire Hall Beach.

Exuding timeless elegance through its sturdy triple-brick construction, majestic 3.5-meter ceilings, exquisite leadlight accents, and intricate decorative cornices and ceiling roses, this sun-drenched layout offers a thoughtfully designed environment that nurtures connection. The inviting front lounge and dining area, enhanced by a charming gas log fireplace, seamlessly transitions into an

**Type** : Apartment  
**Price** : \$1,250,000 - \$1,350,000  
**Land Size** : 143 sqm  
**View** : <https://www.mcewingpartners.com/sale/vic/mornington-peninsula/mornington/residential/apartment/8156395>

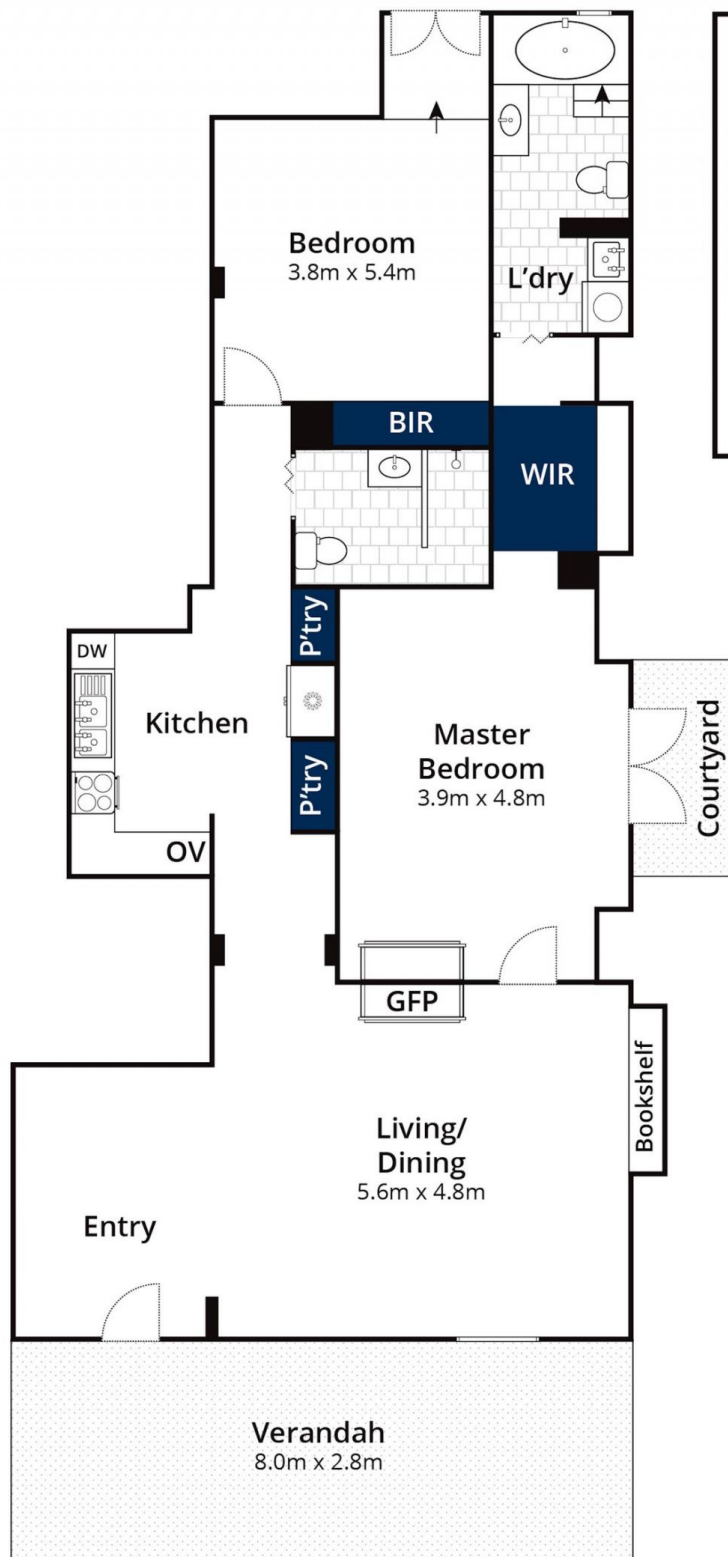
[For full version visit the website](https://www.mcewingpartners.com)



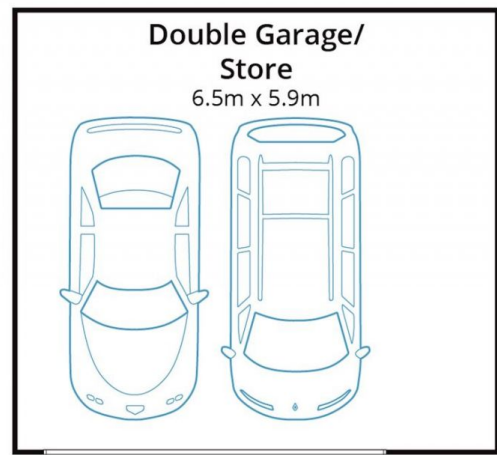
**Dean Phillips**  
0359754555



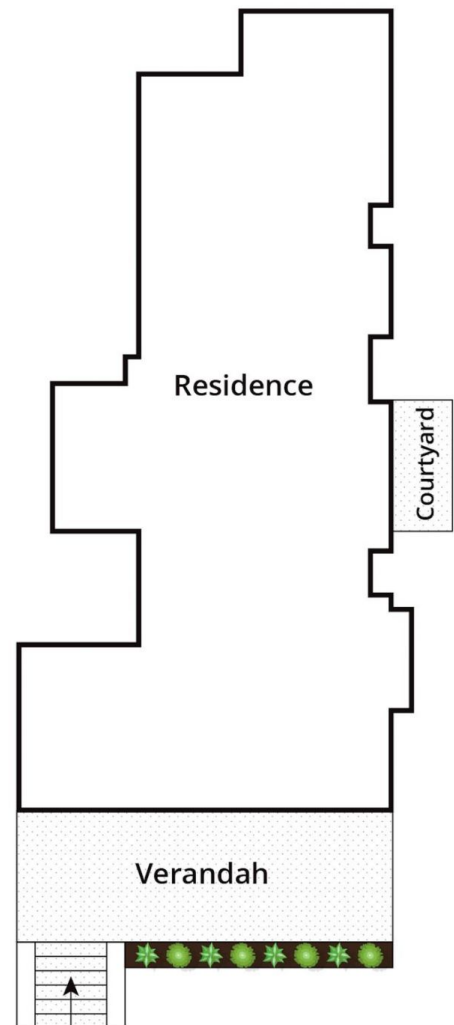
**Alexandra Otte**  
0359754555



Ground Floor



(Not In Position)



Site Plan

Approx House Area 110m<sup>2</sup>

Approx Land Area 143m<sup>2</sup>

Whilst [bwr.com.au](http://bwr.com.au) has made every attempt to ensure the accuracy of the floor plan contained here, measurements are approximate and no responsibility is taken for any error, omission, or mis-statement. This plan is for illustrative purposes only.

**2/14 Tanti Avenue, Mornington**