



## 12 Roehampton Crescent MOUNT ELIZA VIC

4 3 2

An exemplar of minimalist coastal luxury, this architecturally designed residence combines exceptional family practicality with an authentic connection to its natural surroundings and a privileged location that places Ranelagh Beach and Mount Eliza Village only footsteps from home.

Showcasing ingenuitive construction and cutting-edge luxury, this five-bedroom 3-bathroom residence masterfully harmonises seductive design within an expansive indoor/outdoor footprint, where an exquisite selection of natural materials are celebrated throughout. Featuring stunning Yellow Stringybark timber, refined polished concrete floors and sweeping glazing, the home encourages family connection across an open living and

**Type** : House  
**Price** : \$3,600,000 - \$3,800,000  
**Land Size** : 796 sqm  
**View** : <https://www.mcewingpartners.com/sale/vic/bayside/mount-eliza/residential/house/8094810>

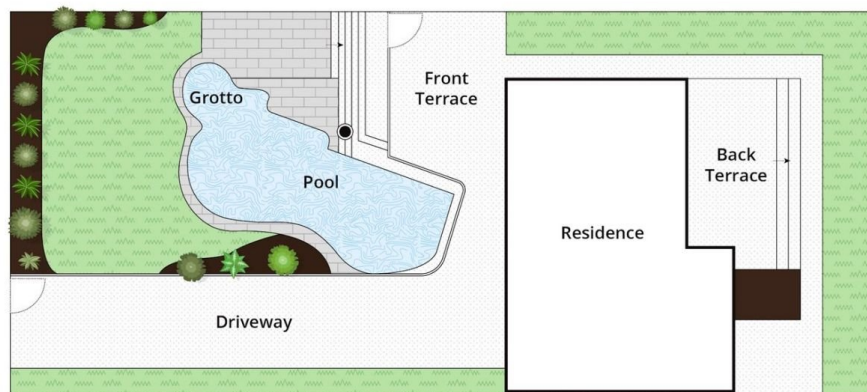
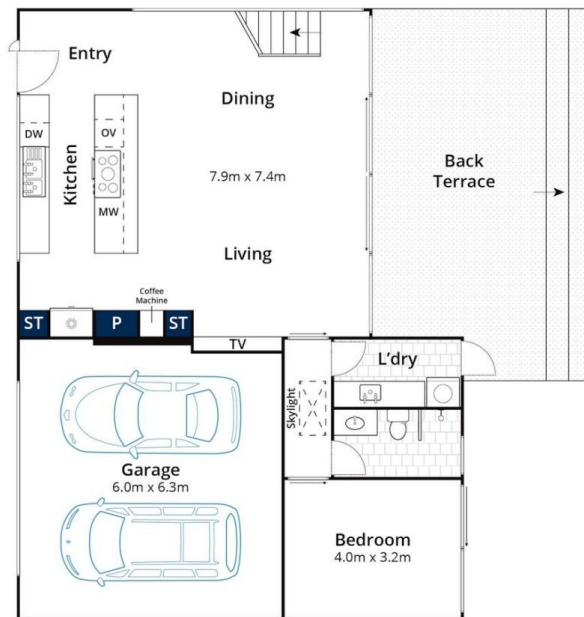
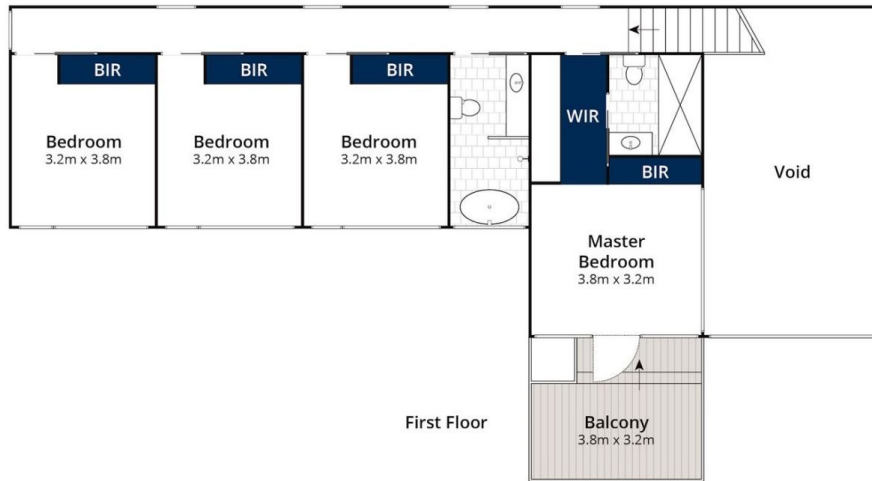
[For full version visit the website](https://www.mcewingpartners.com)



**Quentin McEwing**  
0397872422



**Kelsi Culhane**  
0397872422



Approx House Area 240m<sup>2</sup>  
Approx Land Area 788m<sup>2</sup>

Whilst [bwr.com.au](http://bwr.com.au) has made every attempt to ensure the accuracy of the floor plan contained here, measurements are approximate and no responsibility is taken for any error, omission, or mis-statement. This plan is for illustrative purposes only.

## 12 Roehampton Crescent, Mount Eliza