



108 Bradford Road MOUNT MARTHA VIC

4 3 1

Promising a lifestyle of privilege and privacy moments from the bay's edge, this sprawling dual-level home is an entertainer's paradise with spectacular sweeping bay views and one of Mt Martha's best addresses. Featuring a sparkling self-cleaning inground pool and luxe cabana, the four-bedroom home on half an acre revels in its breathtaking panorama with large windows framing the views and plenty of options to relax or entertain including a multi-zone upper level with two decks and a stylish hostess kitchen. The large master bedroom with a spa bath ensuite is also upstairs, while three generous bedrooms, another living area opening to a poolside terrace and the main bathroom make up the lower level. All set to make a splash this summer, the pool, spa and adjoining pool house with kitchen, bathroom and living/dining area is the perfect party

Type : House
Price : \$3,000,000 - \$3,300,000
Land Size : 2117 sqm
View : <https://www.mcewingpartners.com/sale/vic/mornington-peninsula/mount-martha/residential/house/8092398>



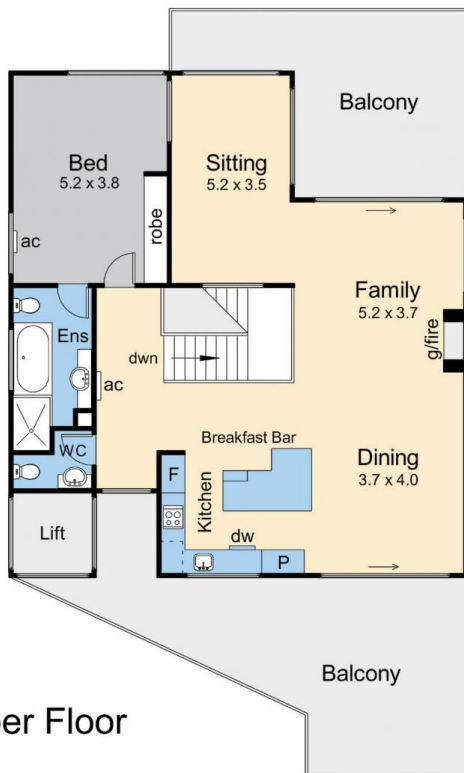
Dean Phillips
0359754555



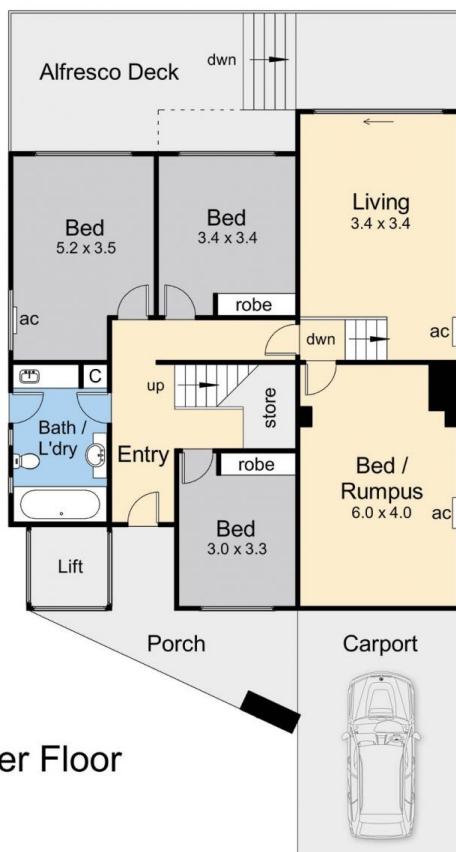
Alexandra Otte
0359754555

[For full version visit the website](https://www.mcewingpartners.com)

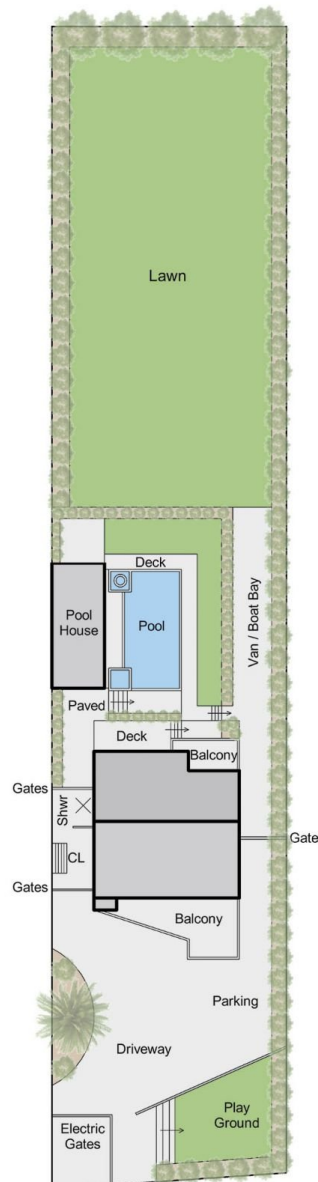
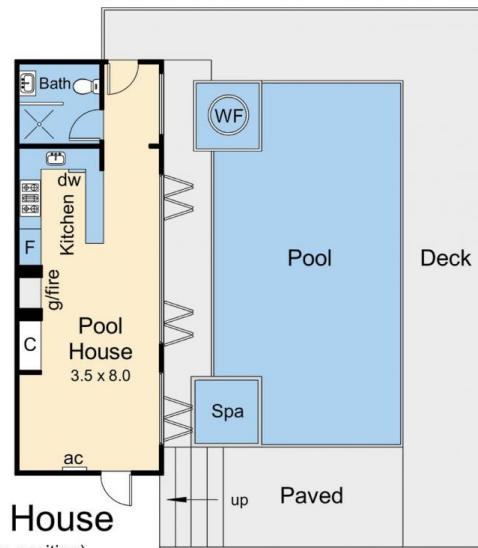
Upper Floor



Lower Floor



Pool House
(not in position)



Site Plan

Internal living area = 31 squares (approx)
 Pool house area = 4 squares (approx)
 External living area = 11.8 squares (approx)
 Total area = 46.8 squares (approx)

108 Bradford Road, Mount Martha

This floorplan is for illustration purposes only and no warranty is given to its accuracy. Purchasers are advised to carry out their own investigations. Produced by **realitywriters** (03) 5970 2222