

1061 Stumpy Gully Road MOOROODUC VIC

4  2  2 

Discover the epitome of modern coastal elegance with this newly built 4-bedroom home nestled in the serene landscapes of Rural Moorooduc. Inspired by the traditional New York Hamptons style, this residence offers a perfect blend of sophistication and relaxed seaside charm.

Key Features: Approximately 5000m² of picturesque grounds. 4 bedrooms including a master with ensuite bathroom. Open plan kitchen with cathedral ceiling overlooking a spacious dining area and lounge. French oak timber floors and wool carpets. Wood fire heater and ducted heating throughout. Ducted cooling system for comfort in summer. Plantation shutters allowing natural light to fill the home. Light colors and wide verandahs enhancing the coastal feel. Modern appliances in the kitchen

Peaceful and private setting . Close proximity to local wineries, approximately 1.8 km from Stumpy Gully Winery

Price : \$1100 per week

View : <https://www.mcewingpartners.com/lease/vic/mornington-peninsula/moorooduc/residential/house/8050208>

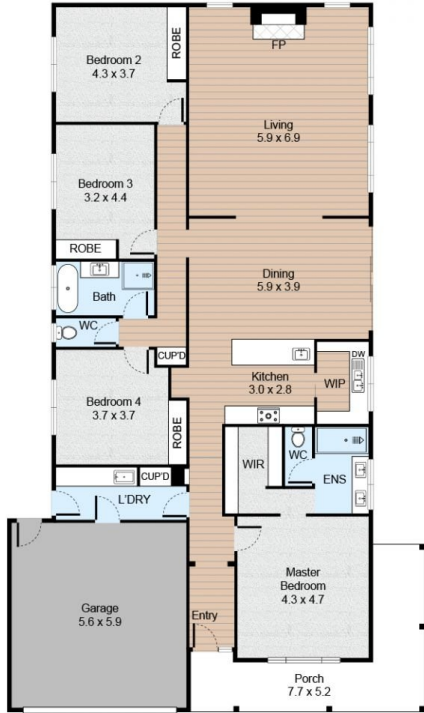


Samantha Stephenson
0397872422

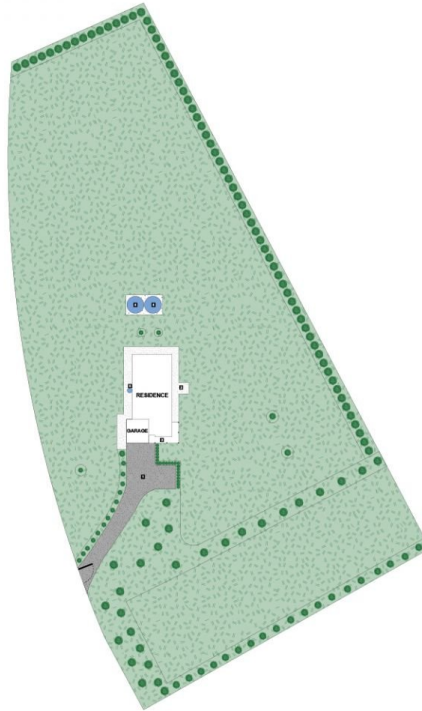
1061 Stumpy Gully Road, Moorooduc



4 Bed
 2 Bath
 2 Car



FLOOR PLAN



SITE PLAN

LEGEND

1. Driveway
2. Porch
3. Outdoor Seating
4. Water Tank
5. Hot Water Tank

This property is ready for you to virtually inspect now
littlehinges.com.au