



7 Manatee Avenue MOUNT ELIZA VIC

4 3 2

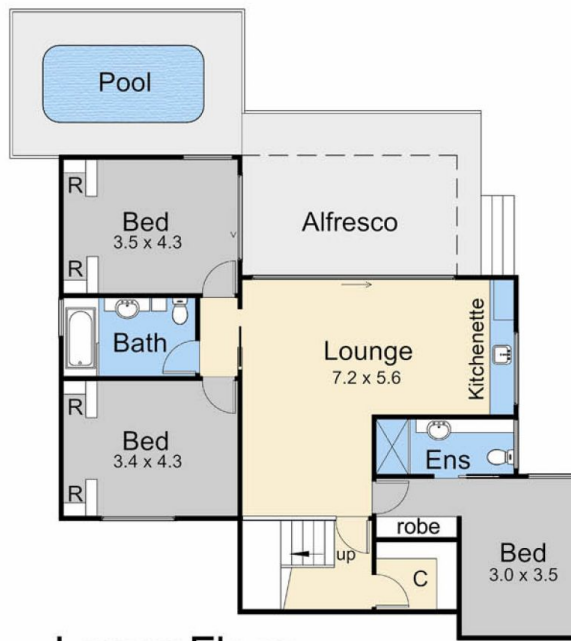
Taking in breathtaking water views spanning from Mornington Harbour in the south to Melbourne's city skyline sitting on the blue horizon to the north, this outstanding coastal 4 bedroom residence is a unique design that beautifully embraces its privileged seaside position. Literally doors from a residents' walkway down to Moondah Beach, a modest façade opens to a spectacular floorplan spread over three levels with an open plan stairway inviting you up to the vast main lounge with large walls of glass and giant sliding doors to the alfresco balcony with a dramatic blue bay backdrop. The master suite has a door to the viewing balcony, while three more bedrooms and two bathrooms on the lower level open to a second lounge with adjoining kitchenette all opening to a garden deck. A short walk to Kunyung Primary School.

Type : House
Land Size : 1030 sqm
View : <https://www.mcewingpartners.com/lease/vic/bayside/mount-eliza/residential/house/8040665>

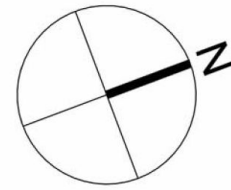


Samantha Stephenson
0397872422

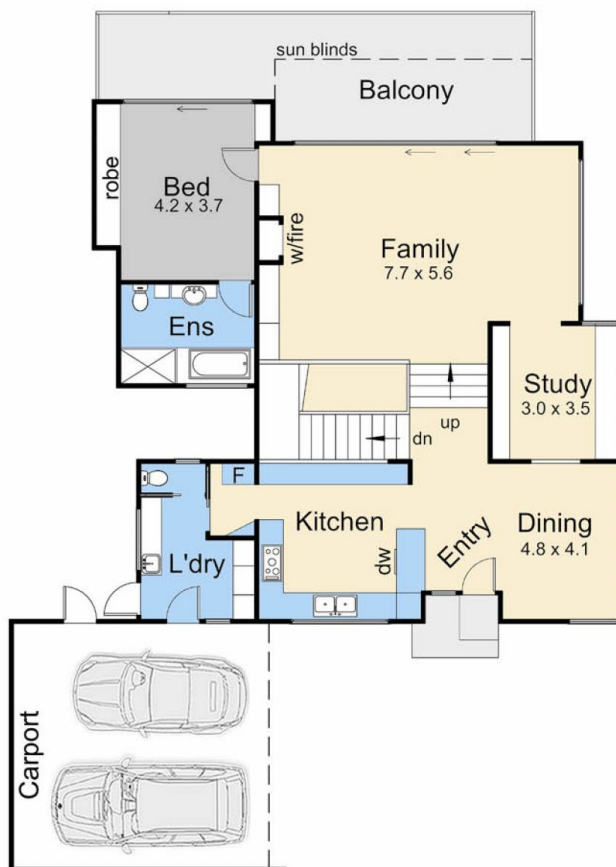
[For full version visit the website](https://www.mcewingpartners.com)



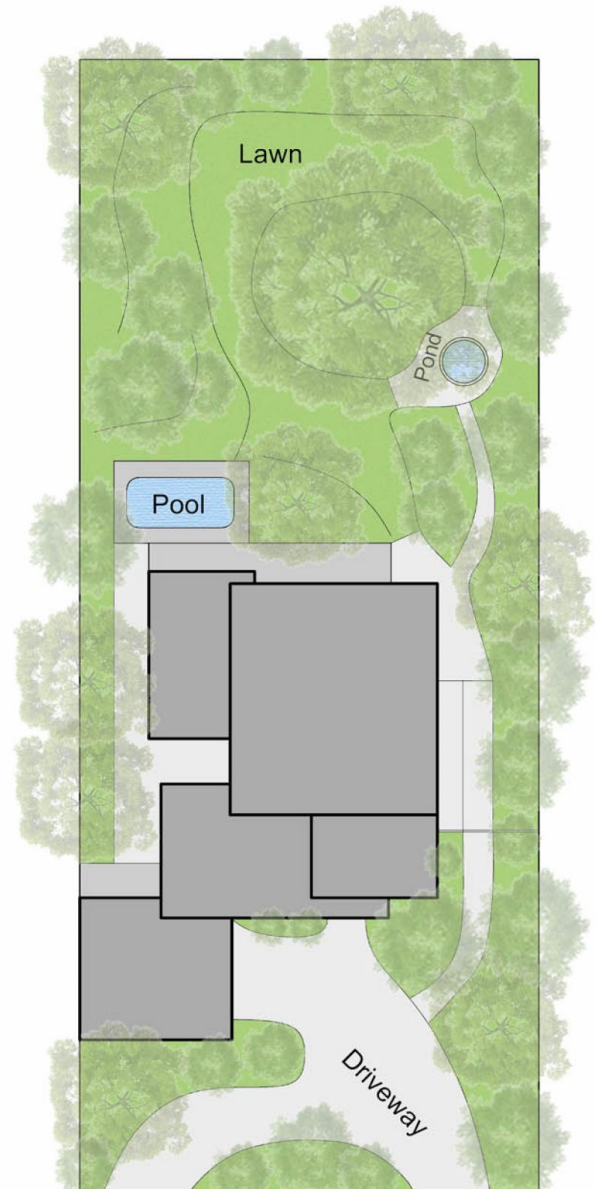
Lower Floor



Internal Living Area
26.4 squares



Upper Floor



Site Plan

7 Manatee Avenue, Mount Eliza

This floorplan is for illustration purposes only and no warranty is given to its accuracy. Purchasers are advised to carry out their own investigations. Produced by **realitywriters** (03) 5970 2222