



4 Brushwood Close SOMERVILLE VIC

5 🛏 2 🚿 2 🚗

Feel the warm embrace of this gorgeous family home the moment you step through the door and discover the beautiful blend of traditional and modern style. Immaculately presented throughout and wanting for absolutely nothing, its tranquil setting offers the perfect combination of peaceful country living and convenience - located only a stone's throw to shops, schools and all the amenities Somerville has to offer.

At the heart of the 5-bedroom home a superb modern-country kitchen boasts quality appliances and serves formal and informal dining alongside generously proportioned lounge and family rooms, where dual aspect windows provide a sublime rural outlook to the expansive 3.76 acre block. A secure fenced backyard with a treehouse for the kids sits alongside a large, covered patio offering a restful retreat for alfresco dining. In addition, six

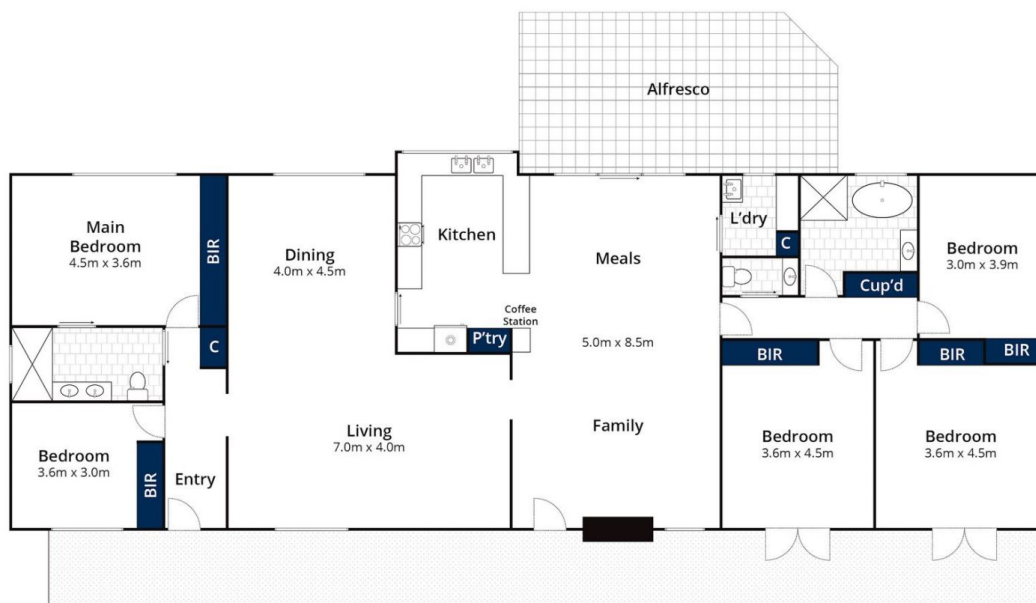
Land Size : 15218 sqm
View : <https://www.mcewingpartners.com/sale/vic/mornington-peninsula/somerville/residential/house/8039415>



Dean Phillips
0359754555



Lisa Bendle
0359754555



Ground Floor



(Not In Position)

Approx House Area 223m²
Approx Land Area 1.52 HA

Whilst bwr.com.au has made every attempt to ensure the accuracy of the floor plan contained here, measurements are approximate and no responsibility is taken for any error, omission, or mis-statement. This plan is for illustrative purposes only.

4 Brushwood Close, Somerville