



11 Bedford Place MORNINGTON VIC

3  2  2 

A peaceful residential setting and a premium corner position provides the perfect foundation for this three bedroom home, where an immaculate all-original charm will inspire those with a desire for uncomplicated living. Beautifully preserved beyond a sweet garden frontage, a free-flow of space illuminated by morning light offers 2-living zones, a central kitchen, three bedrooms, and 2-bathrooms.

With a paved terrace shroud in privacy extending entertaining space beyond that of both formal and informal living and dining zones, the home welcomes children across gardens that require almost minimal maintenance before merging with vehicle access via Karleen Court.

A front bay window captures the warmth of an all-day sunshine across the master bedroom, complete with

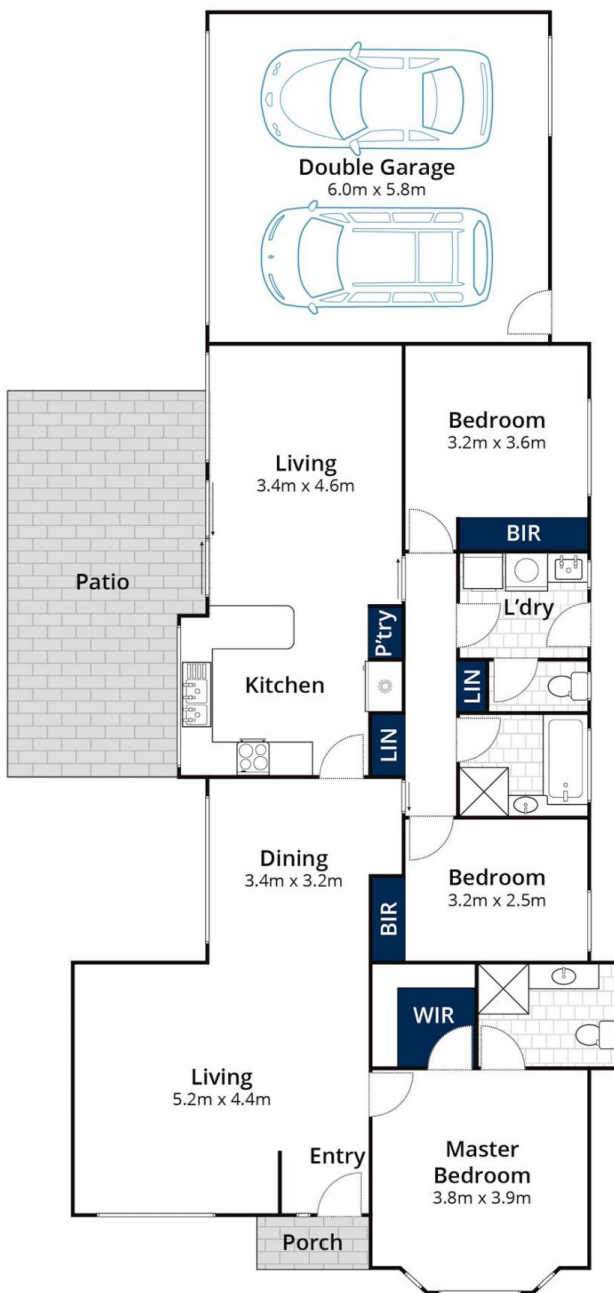
Price : \$ 786,000
Land Size : 563 sqm
View : <https://www.mcewingpartners.com/sale/vic/mornington-peninsula/mornington/residential/house/8025305>



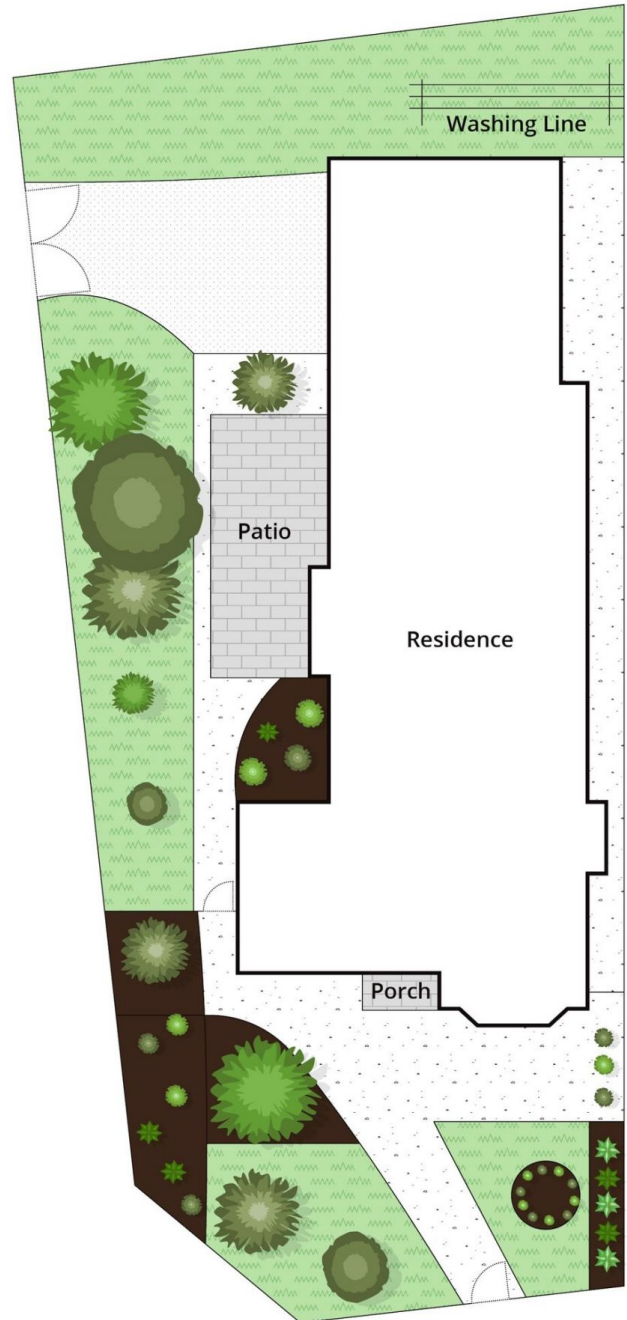
Marcus Gollings
0359754555



Indi Fisher
0359754555



Ground Floor



Site Plan

Approx House Area 157m²

Approx Land Area 572m²

Whilst bwr.com.au has made every attempt to ensure the accuracy of the floor plan contained here, measurements are approximate and no responsibility is taken for any error, omission, or mis-statement. This plan is for illustrative purposes only.

11 Bedford Place, Mornington