



12 Joanne Way MORNINGTON VIC

4 2 2

A homage to everlasting elegance and meticulous craftsmanship, this beautifully maintained family home instantly allures with its impressive street frontage, generous interiors and subtle nod to federation design. Laying claim to 1,105sqm (approx.) of manicured land within the highly-sought Summerfields Estate, a picture-perfect garden and pool setting complements light-filled interiors featuring three separate living zones, a heart-placed kitchen and private accommodation.

Genuinely crafted with an impeccable design, the comfortable layout affords family flexibility across a formal lounge with ornamental gas fireplace, an open living and dining zone, and separate family room, each connecting with the outdoors including a covered alfresco with pool

Type : House
Price : \$ 1,475,000
Land Size : 1104 sqm
View : <https://www.mcewingpartners.com/sale/vic/mornington-peninsula/mornington/residential/house/8012294>

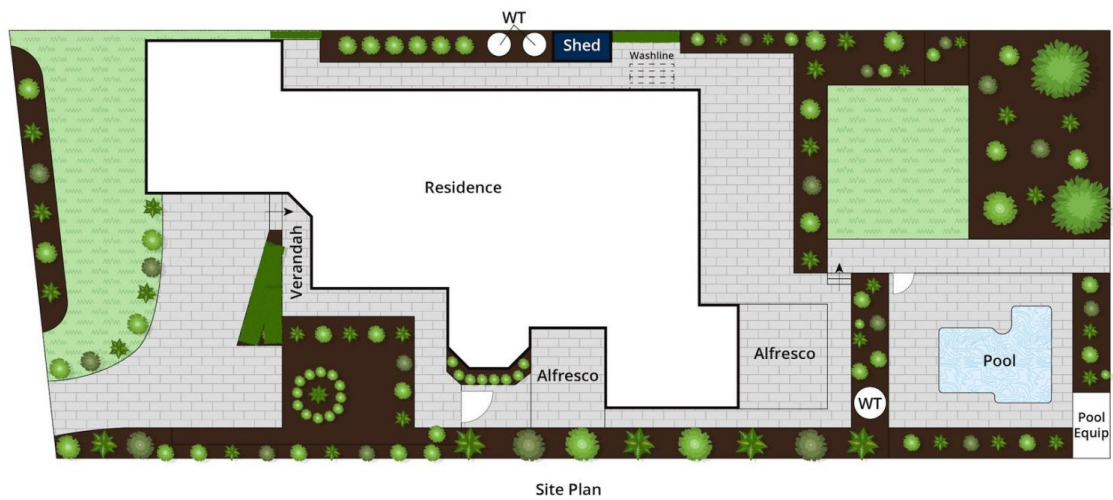


Lisa Bendle
0359754555



Dean Phillips
0359754555

[For full version visit the website](https://www.mcewingpartners.com)



Approx House Area 280m²

Approx Land Area 1104m²

Whilst bwr.com.au has made every attempt to ensure the accuracy of the floor plan contained here, measurements are approximate and no responsibility is taken for any error, omission, or mis-statement. This plan is for illustrative purposes only.

12 Joanne Way, Mornington