



3 Sunrise Court MOUNT MARTHA VIC

4 2 2

Expressing a sublime fusion of elegant finesse and family harmony, this sophisticated residence on 1,010sqm (approx.) has been curated without compromise to offer the epitome of family luxury. A premium address at the base of a quiet cul-de-sac, with an immaculate gardenscape and modern minimalist facade brings effortless living to life with dual living zones, private alfresco and swim spa.

Heightened ceilings and vast proportions embrace a light-letting interior where formal living complements an open family domain with distinct lounge and dining zones. Allowing conversation to flow across a central kitchen, generous stone benchtops with breakfast bar continue with ample cabinetry, Smeg 900mm cooker and LG dishwasher. Landscaped gardens provide a spectacular seasonal backdrop, with a wall of windows opening to a covered alfresco and gas-heated swim spa for those balmy

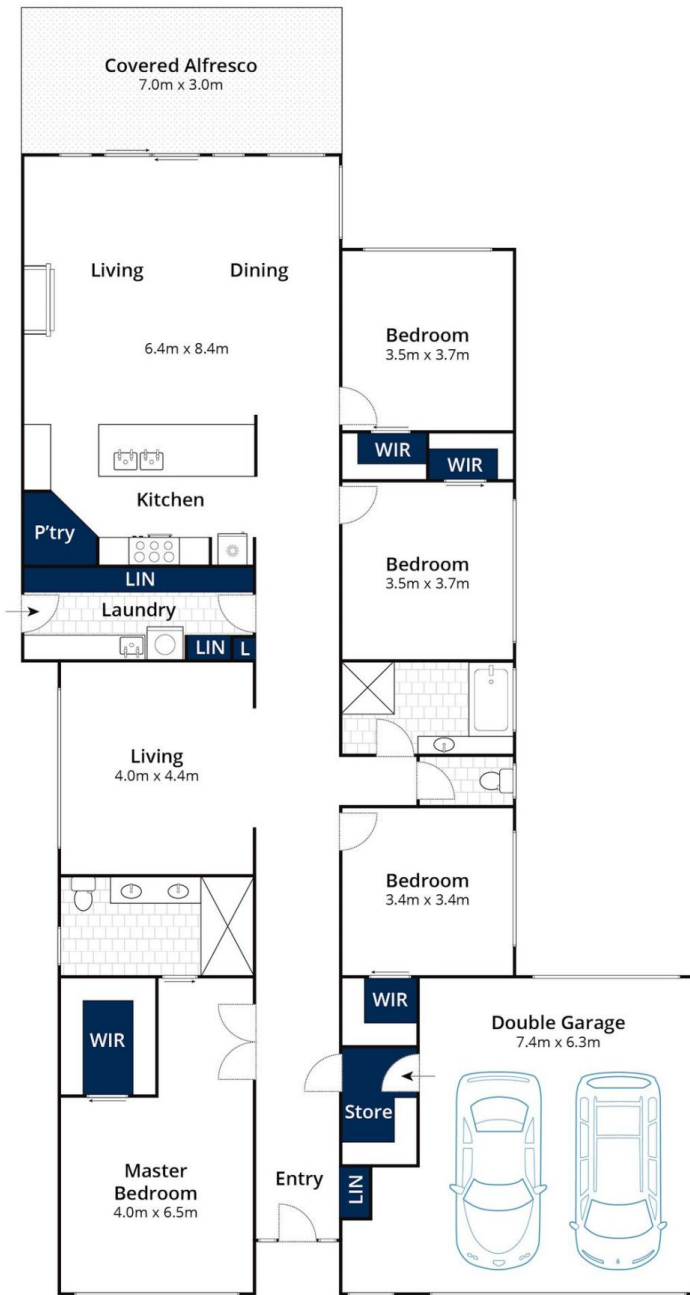
Price : \$ 1,275,000
Land Size : 1010 sqm
View : <https://www.mcewingpartners.com/sale/vic/mornington-peninsula/mount-martha/residential/house/8006605>



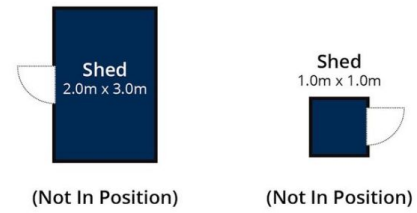
Lisa Bendle
0359754555



Marcus Gollings
0359754555



Ground Floor



Site Plan

Approx House Area 245m²
Approx Land Area 1000m²

Whilst bwr.com.au has made every attempt to ensure the accuracy of the floor plan contained here, measurements are approximate and no responsibility is taken for any error, omission, or mis-statement. This plan is for illustrative purposes only.

3 Sunrise Court, Mount Martha