



## 23 Churchill Road MOUNT MARTHA VIC

4 2 2

Backdropped by spectacular sunsets and passing ships, this breathtaking Hamptons-inspired residence with heated mineral pool, cabana and artist's studio has been sculpted into the elevation of a superb half acre allotment (approx) to capture unparalleled views over the tree canopy to the bay and coastline beyond. Beneath a soaring cathedral ceiling with clerestory windows on the entry level, the residence boasts a culinary kitchen with stone benchtops and quality appliances, while all three living areas are encased in sliding glass doors framing the bay from both levels and opening to a choice of vast alfresco decks. Immaculately landscaped and tiered, the gardens feature a flat lawn area with paths leading to the pool and cabana, while a secluded fire pit area awaits at the bottom of the garden surrounded by lush foliage. Offering a harmonious

**Type** : House  
**Price** : \$ 2,602,500  
**Land Size** : 1926 sqm  
**View** : <https://www.mcewingpartners.com/sale/vic/mornington-peninsula/mount-martha/residential/house/8001099>



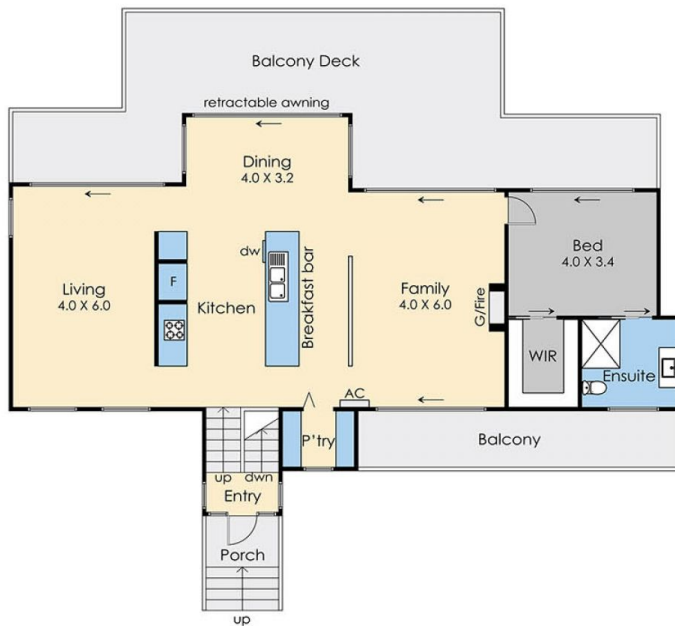
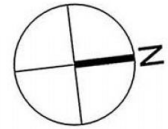
**Dean Phillips**  
0359754555



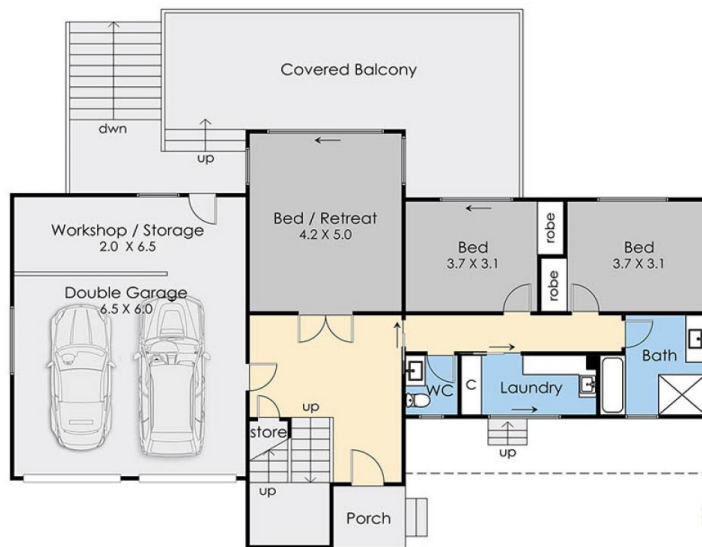
**Alexandra Otte**  
0359754555

[For full version visit the website](https://www.mcewingpartners.com)

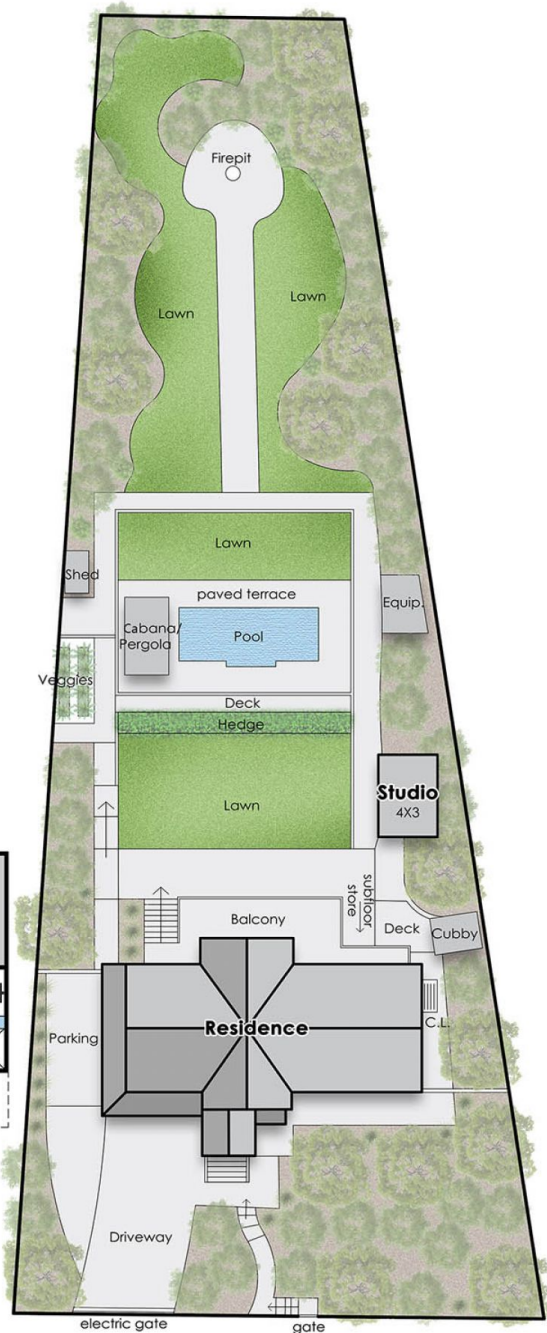
Internal Living Area = 24 squares (approx.)  
 Garage Area = 5 squares (approx.)  
 Deck Area = 15 squares (approx.)  
 Total Area = 44 squares (approx.)



**Entry Level**



**Lower Level**



**Site Plan**

## 23 Churchill Road, Mount Martha

This floorplan is for illustration purposes only and no warranty is given to its accuracy. Purchasers are advised to carry out their own investigations. Produced by **realitywriters** (03) 5970 2222