



2/70 Harrap Road MOUNT MARTHA VIC

3 2 2

Upmarket living in an enviable location, just moments from Mt Martha's coastline and beautiful beaches, all within strolling distance to the shops and cafes of Benton's Square. This single level contemporary townhouse in this prestigious development offers the ultimate in low-maintenance living. An absolute sanctuary for couples, small families or downsizers, this impressive entertainer boasts a spacious designer kitchen with stainless-steel appliances overlooking the luminous open-plan living and dining area with sliding glass doors opening to the private covered alfresco with established gardens. This fabulously appointed home also features an internally accessed double garage and a host of luxury extras, including ducted heating and split-system air-conditioning, and within easy access to Main Street shopping, buses and an array of parks and excellent schools nearby.

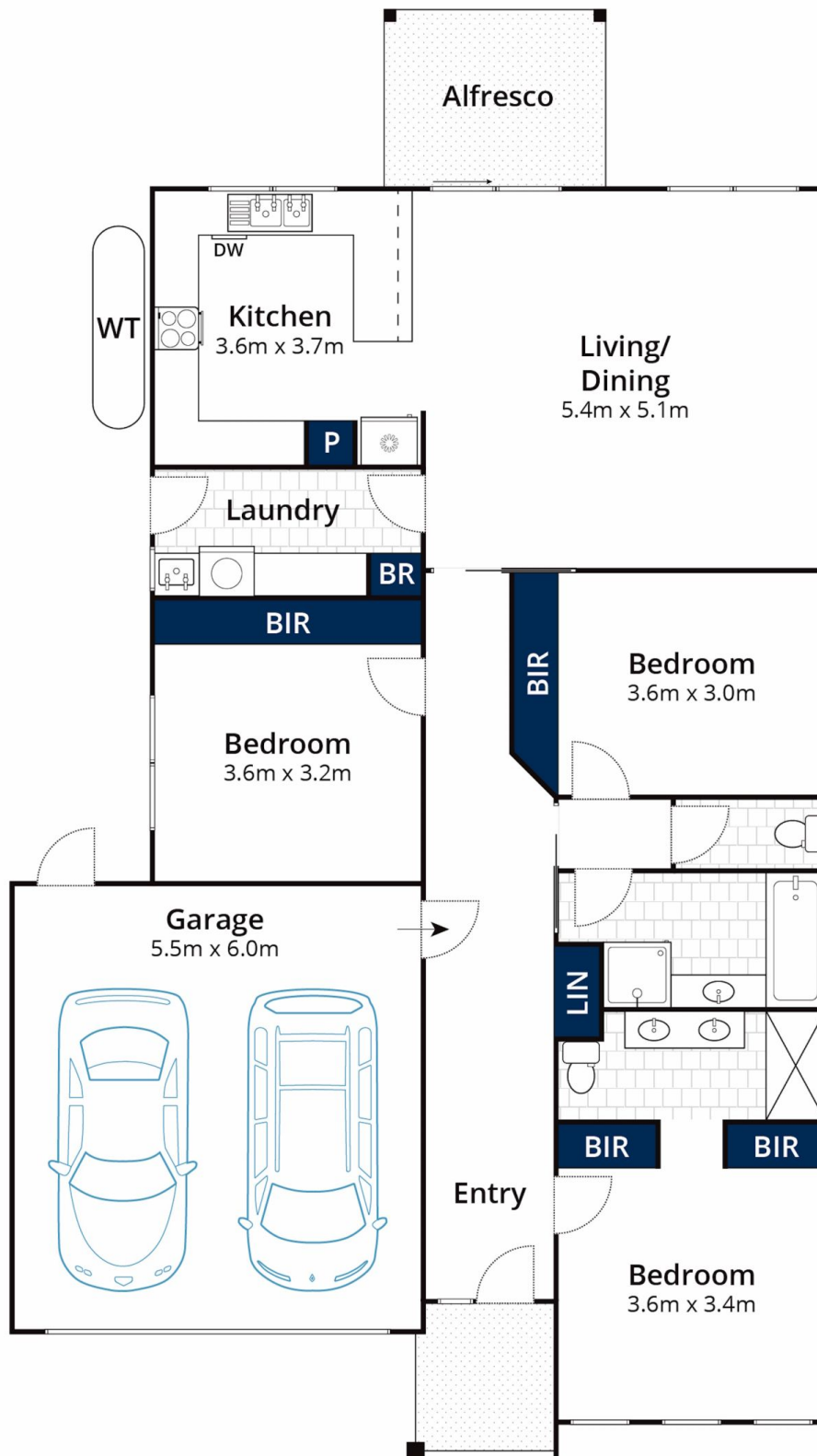
Price : \$ 860,000
Land Size : 268 sqm
View : <https://www.mcewingpartners.com/sale/vic/mornington-peninsula/mount-martha/residential/unit/7999454>



Lisa Bendle
0359754555



Marcus Gollings
0359754555



Approx House Area 156m²

Whilst bwrn.com.au has made every attempt to ensure the accuracy of the floor plan contained here, measurements are approximate and no responsibility is taken for any error, omission, or mis-statement. This plan is for illustrative purposes only.

2/70 Harrap Road, Mount Martha