



12/786 Esplanade MORNINGTON VIC

4 3 2

Effortlessly conquering the divide between classic and modern, 'Parkvue's' palette of warm wooden textures and cool white hues gives the interiors a character that is at once bold enough to achieve distinction and neutral enough to invite the personal flourishes of each individual occupant.

This stunning three bedroom plus study residence is on three levels and is unique to Park Vue. Features include oak flooring and quality wool carpets throughout. Gas fire place with marble surrounds tucked into the corner of the expansive lounge dining area overlooking private balcony taking in the striking bayviews and beyond.

Double glazed windows and doors give added privacy. Contemporary marble bench top kitchen with integrated double door fridge/freezer and full butlers pantry with wine fridge. Miele Appliances.

Master suite with wall to wall storage and exceptional

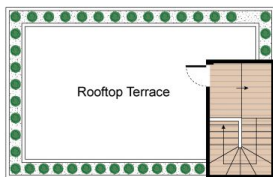
View : <https://www.mcewingpartners.com/lease/vic/mornington-peninsula/mornington/residential/townhouse/7941892>



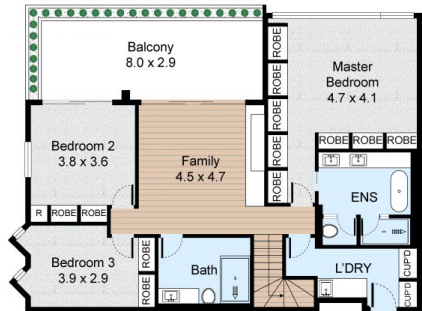
Samantha Stephenson
0397872422

Unit 12, 786 Esplanade, Mornington

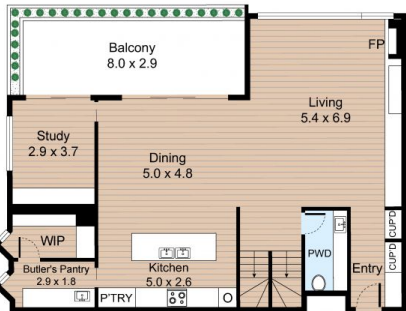
3 Bed 2.5 Bath 2 Car



TOP FLOOR



FIRST FLOOR



SECOND FLOOR



GARAGE

Internal : 244m²
External: 46m²

