



166 Mount Eliza Way MOUNT ELIZA VIC

5 2 2

AN APPLICATION HAS BEEN APPROVED FOR THIS PROPERTY

A rare opportunity has come up for you to own a classic 4-bedroom (flexible 5 bedroom) home in the highly sought-after area of Mt Eliza. The property provides complete privacy with a tall brick fence and electric gate while overlooking a parkland reserve.

The stunningly renovated home includes 4-5 bedrooms, with the main bedroom featuring a luxurious ensuite and walk-in-robe. There is also a ground floor bedroom/study, a spacious family bathroom, a bright and airy kitchen with beautiful stone benchtops. The property also offers a separate living/family room, elegant blackbutt flooring throughout, a large undercover outdoor area, and a

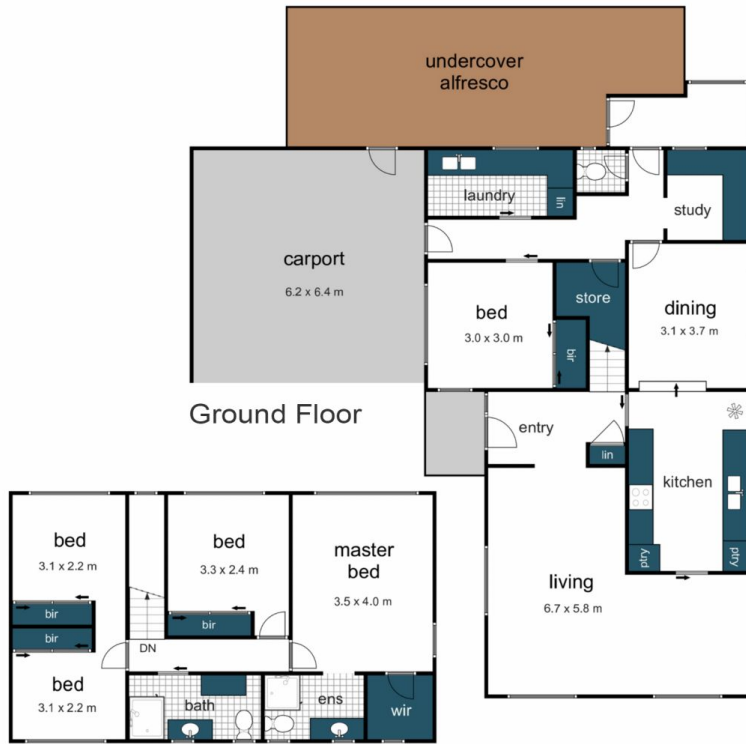
Type : House

View : <https://www.mcewingpartners.com/lease/vic/bayside/mount-eliza/residential/house/7823281>



Samantha Stephenson
0397872422

[For full version visit the website](https://www.mcewingpartners.com)



Ground Floor

First Floor

166 Mount Eliza Way, MOUNT ELIZA

Whilst every attempt has been made to ensure the accuracy of the floorplan contained here, measurements of doors, windows, rooms and any other items are approximate and no responsibility is taken for any error, omission or mis-statement. This plan is for illustrative purposes only and should be used as such by any prospective purchaser. The services, systems and appliances shown here are for illustrative purposes. Produced by [Open2view.com](https://open2view.com)

