



## 33 Caraar Creek Lane MORNINGTON VIC

3 2 2

Positioned in one of Mornington's most exclusive beachside pockets only steps to the Beleura Cliff Path meandering down to the shore, this stunning residence sits on a cascading 1/2 acre (approx) allotment beside Caraar Creek with the golf course just beyond. Backdropped by balmy bay breezes, the elegant abode reveals a stunning central living zone with soaring ceiling, new carpeting and a gas log fireplace in towering sandstone surround, while a second living area upstairs gazes out across the undulating fairways and a treetop panorama. Equipped with stone benchtops, a 900mm oven and integrated dishwasher, the contemporary kitchen shares the open layout, which flows out via sliding glass doors to an expansive alfresco deck and exquisite tiered gardens with a brick barbecue terrace, a firepit zone and gated access to the creek reserve.

**Type** : House  
**Price** : \$ 2,800,000  
**Land Size** : 2113 sqm  
**View** : <https://www.mcewingpartners.com/sale/vic/mornington-peninsula/mornington/residential/house/7712984>



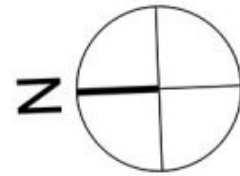
**Dean Phillips**  
0359754555



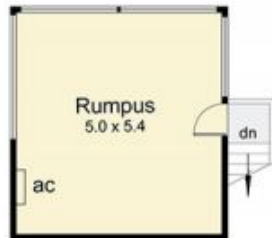
**Alexandra Otte**  
0359754555

[For full version visit the website](https://www.mcewingpartners.com)





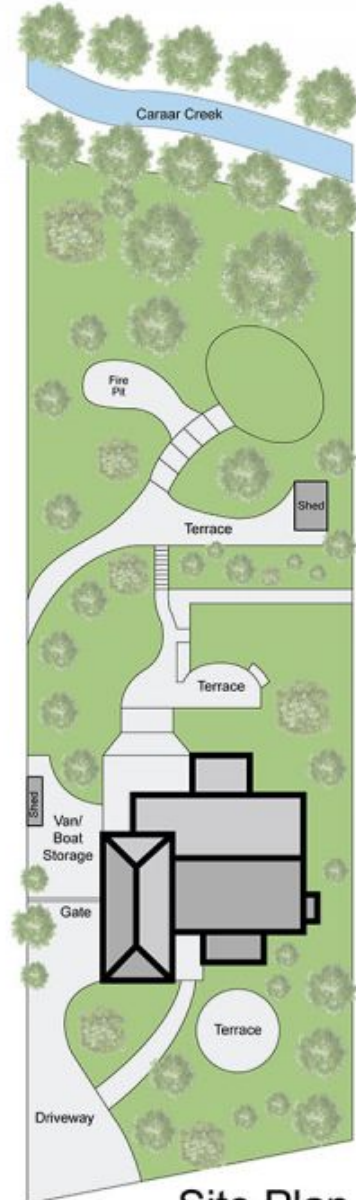
Internal Living Area  
22 squares



Upper Floor



Lower Floor



Site Plan

## 33 Caraar Creek Lane, Mornington

This Floorplan is for illustration purposes only and no warranty is given to its accuracy. Purchasers are advised to carry out their own investigations. Produced by **realitywriters** (03) 5970 2222