



4A Shanns Avenue MOUNT MARTHA VIC

2 2 1

Perfectly placed to enjoy the whisper of sea-breeze, a unique home concealed beyond a charming weatherboard frontage reveals a simplistic layout designed to enjoy sanctuary-like living only steps from Mount Martha's coastline. Alluring buyers with a chic coastal ambience and low-maintenance living, a bullnose veranda opens to expose original floorboards and heightened ceilings, opening across a rear entertaining space where a sun-drenched dining and lounge blends with an expanding kitchen complete with freestanding SMEG oven and laundry access. Mature hedging becomes a focal point both inside and out, as symmetry extends beyond a private entertaining deck, across a flat and secluded rear yard. Completing the internal dimensions, two light-filled bedrooms (built-in robes and master with ensuite) enjoy front-facing aspects before a stylishly renovated main bathroom helps separate accommodation from

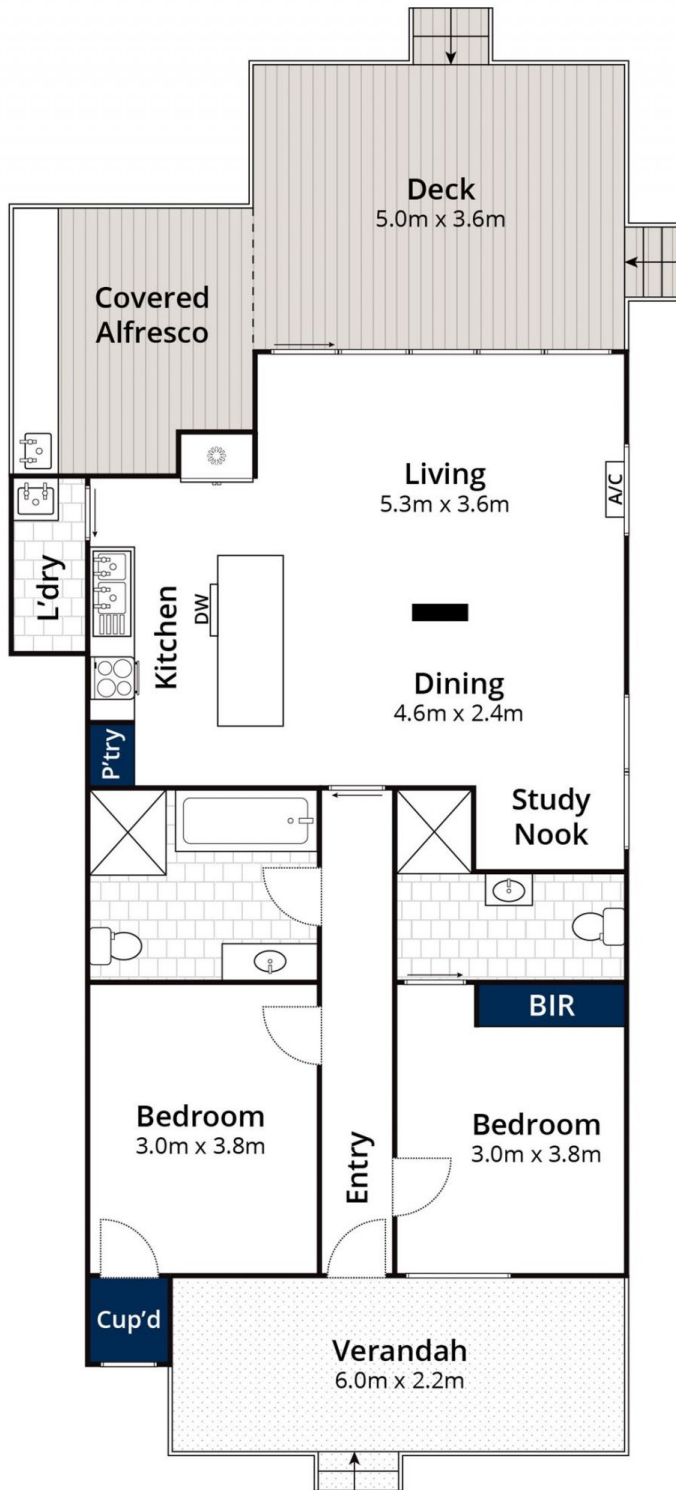
Land Size : 387 sqm
View : <https://www.mcewingpartners.com/sale/vic/mornington-peninsula/mount-martha/residential/house/7702240>



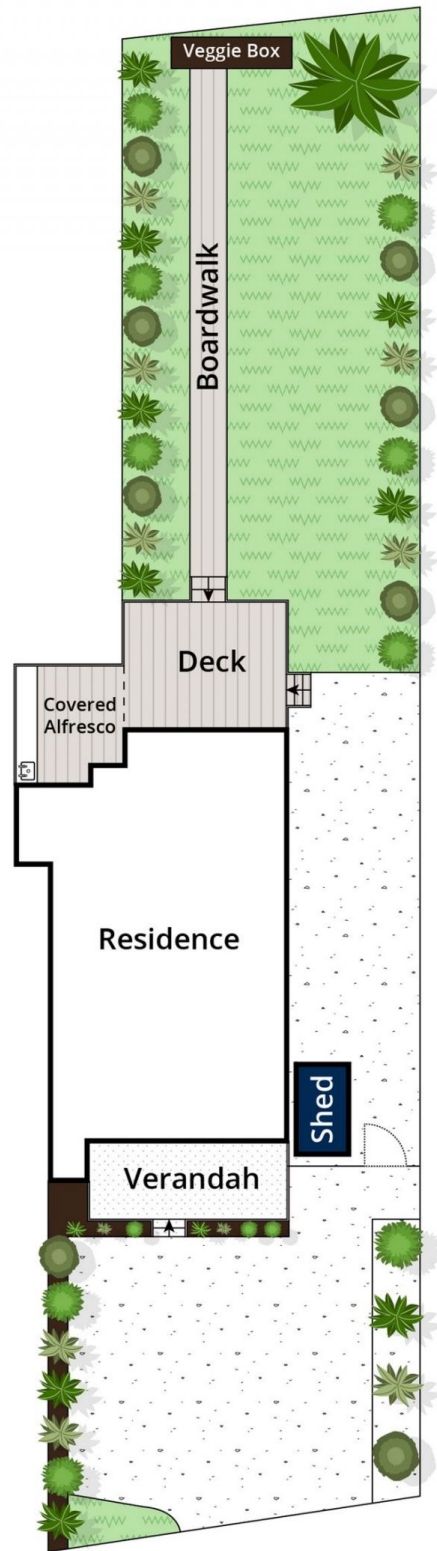
Dean Phillips
0359754555



Lisa Bendle
0359754555



Ground Floor



Site Plan

Approx House Area 89m²

Approx Land Area 386m²

Whilst bwr.com.au has made every attempt to ensure the accuracy of the floor plan contained here, measurements are approximate and no responsibility is taken for any error, omission, or mis-statement. This plan is for illustrative purposes only.

4a Shanns Avenue, Mount Martha