



## 6 Blake Court MOUNT ELIZA VIC

4  2  3 

A vision of space, privacy and style, this transcendent Woodlands address captures refined family luxury and light-filled proportions in one of Mount Eliza's most coveted cul-de-sacs. A distant setback enhances street appeal, with immaculate gardens hosting an unforgettable first impression to a recently completed high-end renovation (within the last 12 months) across both interior and exterior zones.

Heightened ceilings, arched double-casement windows and elegant details enrich a versatile layout destined for entertaining, with an epicurean kitchen celebrating culinary desires through bespoke joinery, ample preparation space and premium Westinghouse appliances.

With views across the in-ground pool from almost every room, the home welcomes peaceful contemplation across a

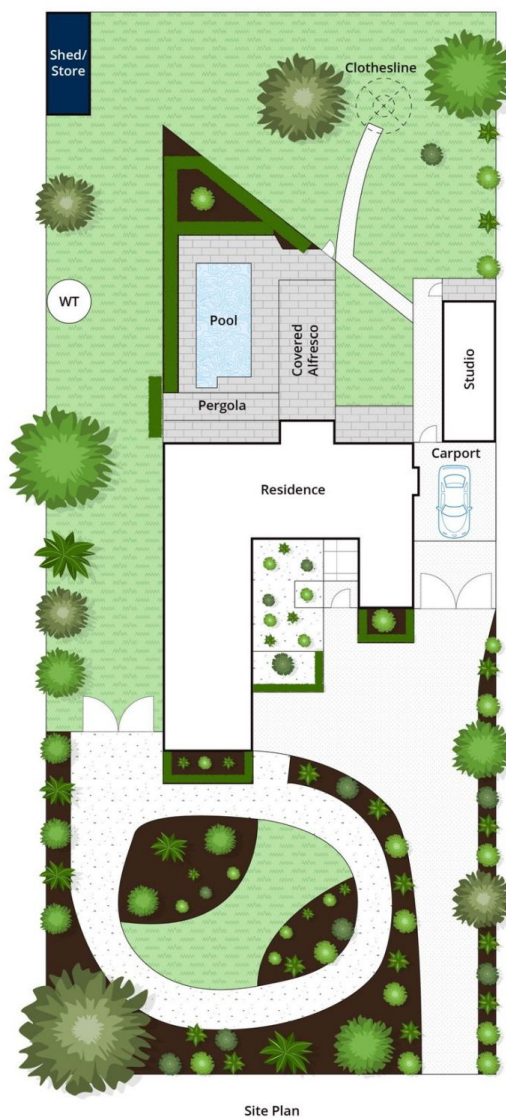
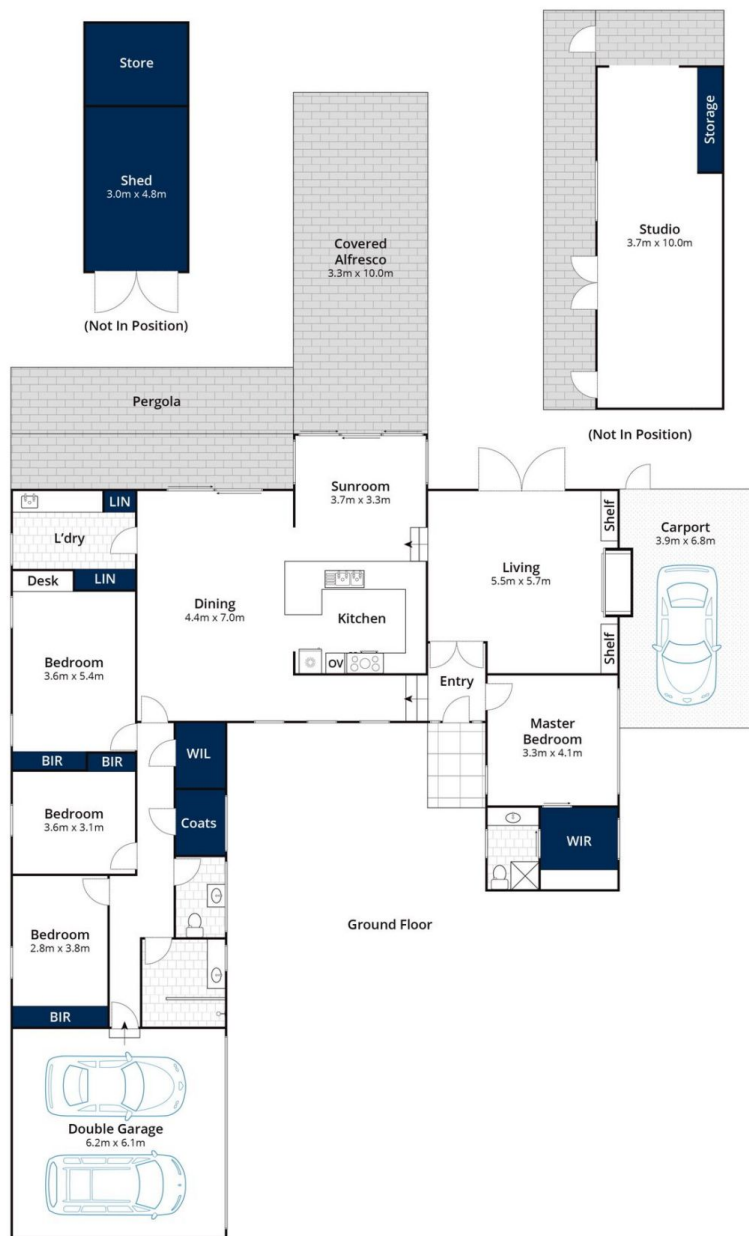
**Price** : \$ 1,925,000  
**Land Size** : 2696 sqm  
**View** : <https://www.mcewingpartners.com/sale/vic/bayside/mount-eliza/residential/house/7694315>



**Quentin McEwing**  
0397872422



**Kelsi Culhane**  
0397872422



Approx House Area 285m<sup>2</sup>  
Approx Land Area 2702m<sup>2</sup>

Whilst [bwr.com.au](http://bwr.com.au) has made every attempt to ensure the accuracy of the floor plan contained here, measurements are approximate and no responsibility is taken for any error, omission, or mis-statement. This plan is for illustrative purposes only.

## 6 Blake Court, Mount Eliza