



34 Canadian Bay Road MOUNT ELIZA VIC

5 3 2

Impeccably designed to capture the essence of grand-scale family living, this spectacular home showcases modern magnificence in an elaborate poolside setting. Boasting two light-filled levels well-equipped to meet every family demand, a home of epic proportions welcomes prestigious beachside enjoyment with freedom to 'lock and leave' if desired.

Flooded with northern light, an entertaining footprint unfolds with sleek parameters as a lavish kitchen commands a central position in the heart of entertaining. Tempting the discerning home chef with a full suite of Miele appliances, luxury stone benchtops and concealed butler's pantry, the kitchen hosts a private poolside outlook with glass sliders confirming strong indoor/outdoor connectivity.

[For full version visit the website](https://www.mcewingpartners.com/sale/vic/bayside/mount-eliza/residential/house/7671119)

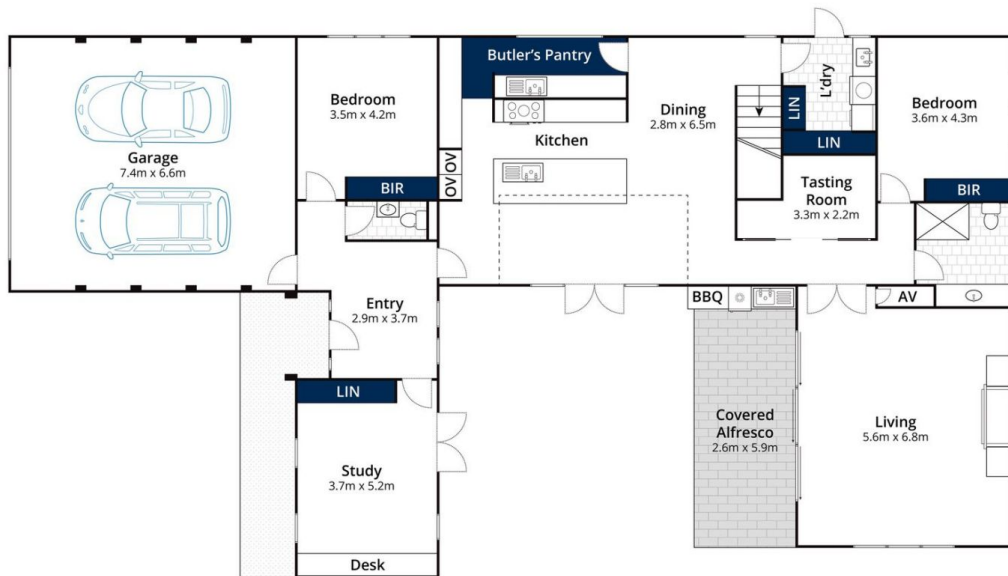
Type : House
Land Size : 827 sqm
View : <https://www.mcewingpartners.com/sale/vic/bayside/mount-eliza/residential/house/7671119>



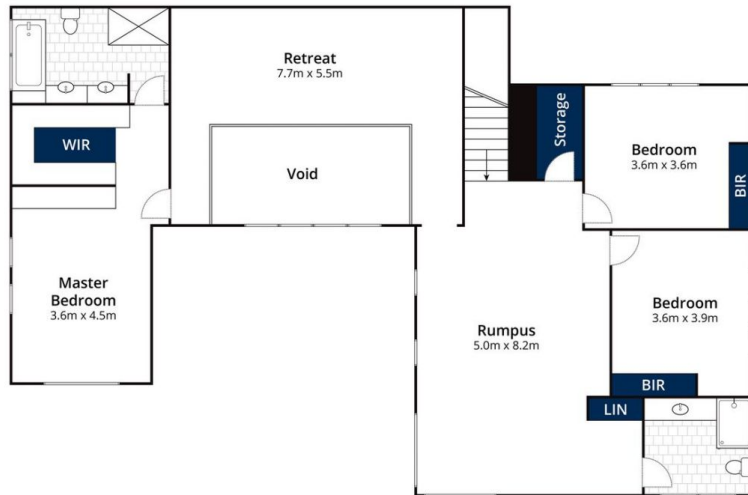
Quentin McEwing
0397872422



Kelsi Culhane
0397872422



Ground Floor



Upper Floor



Site Plan

Approx House Area 393m²

Approx Land Area 835m²

Whilst bwr.com.au has made every attempt to ensure the accuracy of the floor plan contained here, measurements are approximate and no responsibility is taken for any error, omission, or mis-statement. This plan is for illustrative purposes only.

34 Canadian Bay Road, Mount Eliza